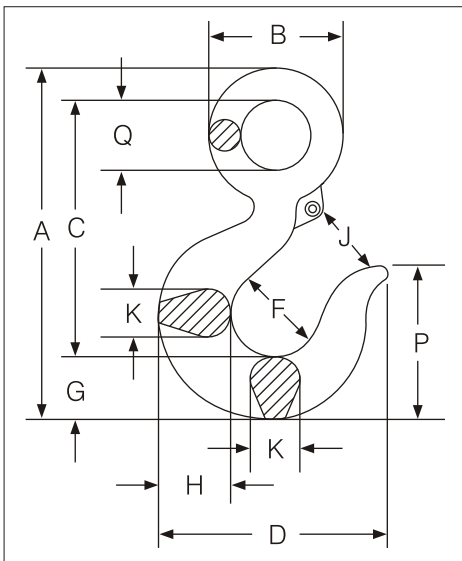


Eye Hooks



- The most complete line of Eye hooks. Available ½ ton to 60 tons.
- Proper design, careful forging and precision controlled quench and tempering give maximum strength.
- Every Eye Hook has a pre-drilled cam which can be equipped with a latch.
- Eye hooks are load rated.
- Available in M.S./ Carbon steel and alloy steel.



EYE HOOK
SL-320

Working Load Limit* t		Dimensions (mm)										
Carbon	Alloy	A	B	C	D	F	G	H	J	K	P	Q
0.8	1.25	110	37.3	81.5	73.0	31.8	19.1	20.1	24.6	14.2	51.0	19.1
1	1.6	125	44.5	93.5	81.0	35.1	21.3	23.9	26.9	15.8	57.0	23.1
1.6	2.5	141	51.5	104	92.0	38.1	25.4	29.5	28.5	19.1	64.0	28.7
2	3.2	162	61.0	119	104	41.4	28.5	33.3	31.8	21.3	72.0	31.8
3.2	5.4	201	74.5	147	125	51.0	36.6	41.2	38.1	28.5	90.5	39.6
5	8	256	97.0	187	165	63.5	46.0	52.0	47.8	35.1	113	51.0
7.5	11.5	316	119	230	192	76.0	57.0	66.5	57.0	41.2	140	62.0
10	16	354	137	255	221	82.5	65.5	74.5	63.5	49.3	157	72.0
15	22	434	168	318	279	108	75.5	89.0	86.0	60.5	186	89.0
20	30	495	178	357	346	127	92.0	117	102.0	76.0	223	89.0
25	37	630	216	462	357	137	116	127	108.0	92.0	289	114
30	45	697	236	511	392	152	129	140	121.0	94.5	321	125
40	60	821	273	602	470	178	152	165	146.0	113	376	145

*NOTE : Proof load is 2 times Working Load Limit. All carbon hooks-average straightening load (ultimate load) is 5 times Working Load Limit. Alloy eye hooks 1 ton to 22 ton - average straightening load (ultimate load) is 4 times Working Load Limit. Alloy eye hooks 30 tons through 60 tons - average straightening load (ultimate Load) is 4 times the Working Load Limit. All Alloy hooks-average straightening load (ultimate load) is 4 times Working Load Limit.



Authorised Distributor



USHA MARTIN INDUSTRIES



RBG Group
An ISO Company

**JIANGSU ASIAN STAR
ANCHOR CHAIN**

Specifications given are indicative and are subject to change.